

KZN-Forest Conservation Network
welcomes you to a talk by
Prof. Eugene Moll:

***Hawaan Forest – past, present
and future***

**Plant Ecophysiology
Research Group (PERG)**

**School of Life Sciences
University of KwaZulu-Natal
Westville Campus**

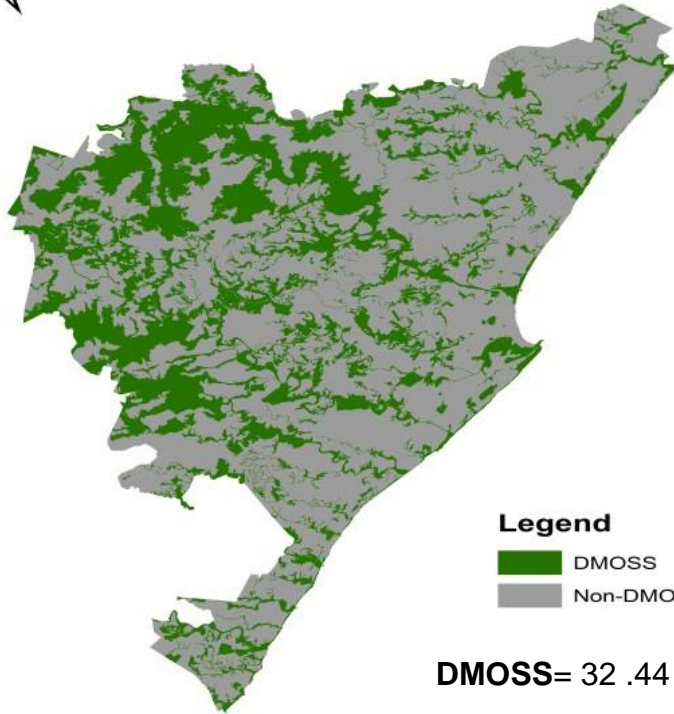
**Drs Syd Ramdhani, Bobby
Varghese, Dalia Varghese,
Oliver Kambaj and Sershen**

**RESEARCH
PROGRAM:**

**Plants in a
Changing
Climate**



MOSS (1979) , DMOSS (1989) and Non-DMOSS open spaces within Durban



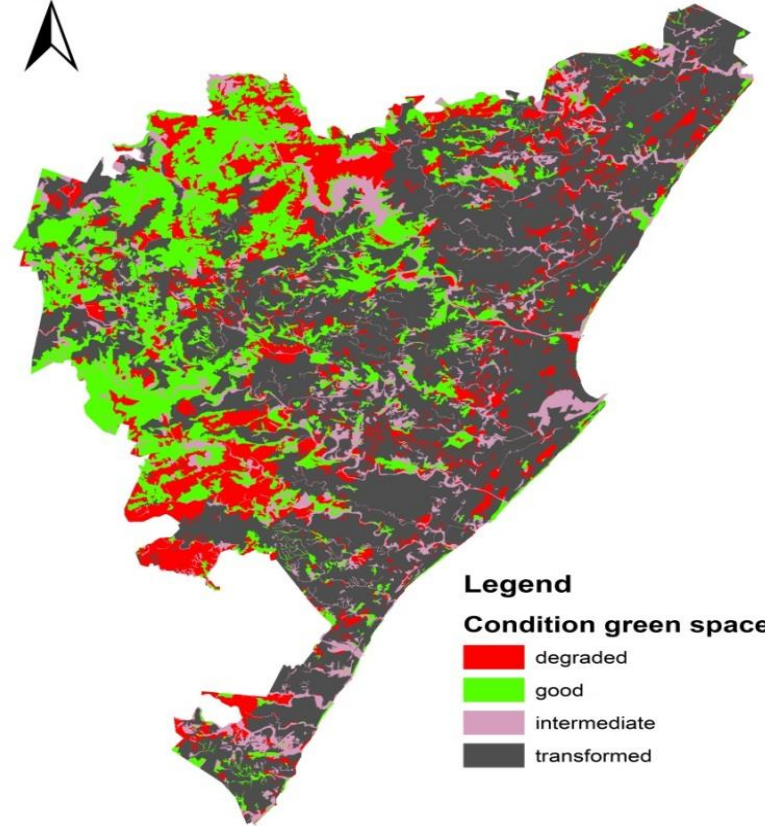
Legend
■ DMOSS
■ Non-DMOSS

DMOSS= 32 .44 %
Non-DMOSS= 67.56%

0 8 750 17 500 35 000 Meters



Status of green space within Durban



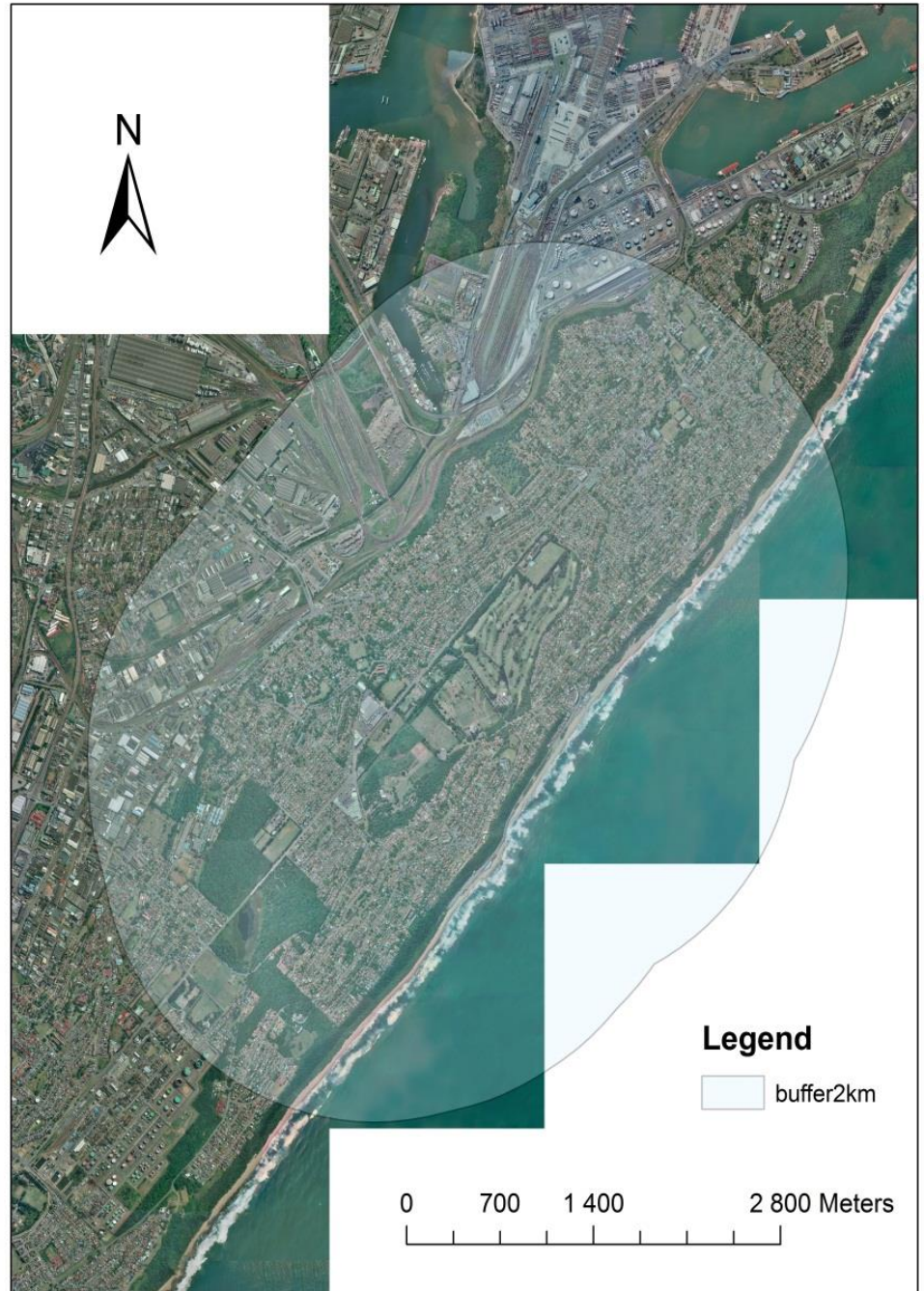
Legend
Condition green space
■ degraded
■ good
■ intermediate
■ transformed

0 7 000 14 000 28 000 Meters

Condition	Percentage (%)
Degraded	16
Good	21
Transformed	52
Intermediate	11



Coastal
Ecosystems are
particularly
vulnerable



Sites:

- **Hawaan**
- **Umdoni**
- **Twinstreams**
- **Umdloti (future site)**

Long-term monitoring



- Classic vegetation survey methods
- Quadrats (fixed)
- Seasonal sampling
- Consecutive years for 10 years
- Taxonomic identification

Long-term monitoring



- Air and soil temperature
- Humidity
- Soil physical and chemical properties
- Soil moisture content
- Light interception

Future Projects:

- **Impacts of alien invasive clearing**
- **Seed and seedling ecology of framework species**
- **Invertebrate diversity**
- **Soil microbial community profiling**
- **People and Forests: Communities, Institutions, and Governance**

Future Projects:

- **Impacts of alien invasive clearing**
- **Seed and seedling ecology of framework species**
- **Invertebrate diversity**
- **Soil microbial community profiling**
- **People and Forests: Communities, Institutions, and Governance**

KZN-Forest Conservation Network

- **Brings together civil society, government, corporate sector and educational institutions to discuss, inform, facilitate and/or implement forest conservation/management strategies.**
- **Members can suggest/comment on research conducted within forests that they manage/have custodianship of.**
- **Members will be granted access to data and reports generated on various forests focused on by research-arm of the network.**
- **Participatory approach to forest conservation will hopefully benefit both the stakeholders and the forests**

Acknowledgements:

- **Hawaan Conservation Trust**
- **Dave Henry**
- **Jocelyn Sutherland**
- **Teddy Govender**
- **Tongaat Hulett**
- **School of Life Sciences - UKZN**
- **Tracey Simkiss & Umdloti conservancy**
- **Phoebe & Alastair Carnegie**
- **Steve and Kim (Twinstreams)**
- **Crous (Umdoni)**
- **Prof. Eugene Moll**